

CK256

Thermal Printer Controller Board

DESCRIPTION

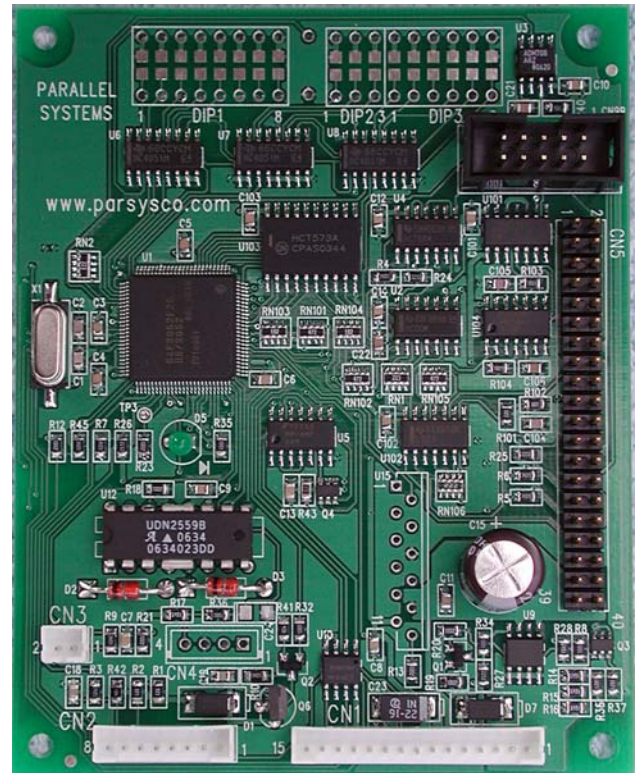
The CK256 is a text and graphics controller board for the Seiko LTP256 Family of thermal printer mechanisms. The Seiko LTP256 uses 58 mm paper and high speed fixed head technology.

The CK256 is a Form-Fit-Function replacement for the discontinued Seiko IF2001-01B except that autocutter circuitry has been removed. Consult factory for OEM quantities with cutter.

CK256 is built to order for OEM customers.

FEATURES

- Compatibility**
 CK256 controls the SEIKO LTP256F-C192 thermal printer mechanism.
 CK256 strictly adheres to all Seiko design recommendations for head and motor protection logic and warnings for operation of the LTP256F-C192 mechanism.
 All connector positions and pinouts are a direct match for IF2001-01B
 DIP switch settings and positions are a direct match for IF2001-01B
- Host Interfaces**
 Both Serial and Parallel ports are provided.
- Environmental Conditions**
 CK256 operates over the same operating and storage range as the LTP256F-C192 mechanism.
- Head Protection**
 The CK256 *does not* require special power sequencing to protect the head.
- Diagnostics**
 A full RAM and ROM test is performed at power on. The ROM is protected by a 16-bit CRC.
- Power Requirements**
 CK256 uses +5V (+/-5%) for control circuits. +24V (+/- 1V) is used by the thermal print head and motors.



MECHANISM SUPPORTED

MODEL	V (Volts)	PAPER WIDTH (mm)	PRINT WIDTH (mm)	WIDTH (dots)
LTP256F-C192	5 & 24	58	48	192

DIMENSIONS

80 mm x 100 mm x ~18 mm

PART NUMBERING

Part Number

CK256 Serial and Parallel , no Cutter

Parallel Systems Corp.
 118 Tenney Street (888) 529-1120
 Georgetown, MA 01833 (978) 352-7100
 USA (978) 352-7111 Fax